



Meat Technologies

Mobile Solutions

On-Wheels | Modular | Containerized



'animal welfare-friendly on-farm slaughter'



CANTEK

MOBILE SLAUGHTER AND COOLING UNITS

Mobile slaughter units are great solutions for people having difficulties in finding modern and appropriate slaughter facilities for slaughter services close by. Our solution approach supports local farmers to handle their livestock without additional transfer and slaughter costs. The mobile units are configured to satisfy cattle, sheep, goat, poultry and pig slaughter + processing in a self-contained environment from start to finish and store the final products in mobile chilling rooms to keep the meat fresh in an uninterrupted cold chain.

The on-wheels model is for the target group that wants to use the unit at different locations frequently and intends to generate income from the offered slaughter service.

The modular and containerized model is for the target group that can either use the mobile unit with frequent change of location or wants to have it installed for permanent use at one location with the focus of generating income by the meat and by-products deriving from the slaughter process

The units are designed to be quickly installed. They can be either connected to on-site water and power supply or source all necessities from its own technical infrastructure.

The units are made from PU sandwich panels with steel supporting structure, CTP or of a regular container material; therefore either shipment option is possible: in a dismantled or assembled manner. While dismantled systems are advantageous at overseas transportation, the assembled system is more advantageous during highway transportation. Dismantled systems can be easily installed under our supervision by detailed assembly manual guides.

Mobile unit solutions are cost-effective for the user while the animal is treated in a humanely manner. The animal remains in its familiar environment, it is neither injured nor stressed before the slaughter act happens. The versatile unit is operated at maximum flexibility since it can be operated according to personal preference, regardless of when or where it is used.

Cantek provides mobile unit solutions for several purposes: the slaughter process, the meat deboning and packaging, the offal cleaning, the chilling, cooling or blast freezing of final products of any shape.

The units are designed to be operated as self-sufficient systems and can even be combined to complete customized processing plant structures.



MOBILE CATTLE SLAUGHTER UNIT-ON WHEELS

M-SH-CATTLE-OW40

TYPE: ON WHEELS



- ❖ A self-contained slaughter unit for cattle with a slaughter capacity at min. 8 head per hour.
- ❖ The unit comprises a towable trailer, so that it just needs to be connected to a truck for transportation.
- ❖ 'Plug-n-play' and ready to use.
- ❖ Mobile solutions eliminate the need for civil or mechanical work as they arrive pre-equipped, minimizing construction and setup time = self-sufficiency by an integrated technical equipment room.
- ❖ Suitable for daily use at any location, i.e. the backyard of a farm.
- ❖ Cattle with max. 700 kgs of live weight can be slaughtered properly.
- ❖ Ensuring food safety and preventing contamination in a secure setting by adhering to specific hygiene regulations.

MOBILE CATTLE SLAUGHTER UNIT-ON WHEELS

M-SH-CATTLE-OW40

TYPE:ON WHEELS

Technical Data

- ❖ Dimensions: W:2550, L:13600, H:5300 mm (H:3800 mm when closed)
- ❖ Generator: 72 kvA (57,6 kW)
- ❖ Electricity: 380/400 V, 50 Hz
- ❖ Clean Water Inlet: DN 20
- ❖ Waste Water outlet: DN 50
- ❖ Blood Outlet: DN 20

Unit Equipment

- ❖ Trailer Chassis
- ❖ Double Deck slaughter Construction
- ❖ CTP Panel Covering
- ❖ Floor Covering and Drainage (SS)
- ❖ Stunning Box (SS)
- ❖ Bleeding Area & Processing Area Tube rail systems (SS)
- ❖ Bleeding, Head taking, Transferring, Carcass Lowering Cranes
- ❖ Tube Rail Bleeding Hooks (SS)
- ❖ Tube Rail Processing Hooks (SS)
- ❖ Hydraulic Leg opening and Transferring Platform (SS)
- ❖ Hydraulic De-Hiding Machine (SS)
- ❖ Hydraulic Tripe and Carcass Splitting Platform (SS)
- ❖ Overhead Carcass Weighting (SS)
- ❖ Head Chute & Tripe Chute (SS)
- ❖ Washbasin & Knife Sterilizers (SS)
- ❖ LED Lighting
- ❖ Generator
- ❖ Blood Collection Tank (SS)
- ❖ Waste Water Collection Tank (SS)
- ❖ Clean Water Storage Tank (SS)
- ❖ Water Heater
- ❖ Fully installed piping (SS)
- ❖ Fully installed electrical cabling
- ❖ Cleaning System (Combination Unit – Water, Chemicals, Disinfectant)
- ❖ Hydraulic Control System for Constructions and equipment
- ❖ Electrical Control Panel with PLC control

Optional:

- ❖ *EFA Leg Cutting Share*
- ❖ *EFA Carcass Splitting Saw*
- ❖ *EFA Breastbone Saw*
- ❖ *EFA Quartering Saw*
- ❖ *EFA Stunner*

(SS:AISI 304 Stainless Steel)



MOBILE CATTLE SLAUGHTER UNIT-ON WHEELS

M-SH-CATTLE-OW40

TYPE: ON WHEELS

Technical Room

Weighting

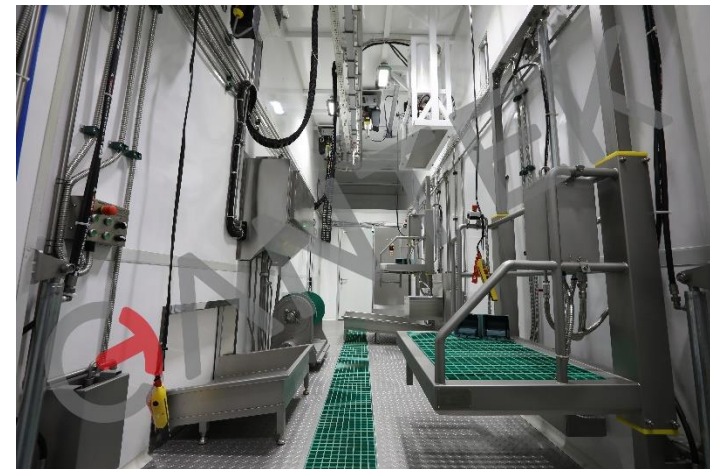
Transferring & De-hiding



Carcass
Quartering

White & red offal
removal and
Carcass Splitting

Stunning & Bleeding



MOBILE SHEEP & GOAT SLAUGHTER UNIT-ON WHEELS

M-SH-SHEEP-OW100

TYPE: ON WHEELS



- ❖ A self-contained slaughter unit for sheep and goats with a slaughter capacity at min. 12 head per hour.
- ❖ The unit comprises a towable trailer, so that it just needs to be connected to a truck for transportation.
- ❖ 'Plug-n-play' and ready to use.
- ❖ Mobile solutions eliminate the need for civil or mechanical work as they arrive pre-equipped, minimizing construction and setup time = self-sufficiency by an integrated technical equipment room.
- ❖ Suitable for daily use at any location, i.e. the backyard of a farm.
- ❖ Ensuring food safety and preventing contamination in a secure setting by adhering to specific hygiene regulations.

MOBILE SHEEP&GOAT SLAUGHTER UNIT-ON WHEELS

M-SH-SHEEP-OW100

TYPE: ON WHEELS

Technical Data

- ❖ Dimensions: W:2550, L:13600, H:3800 mm
- ❖ Generator: 65 kVA (52 kW)
- ❖ Electricity: 380/400 V, 50 Hz
- ❖ Clean Water Inlet: DN 20
- ❖ Waste Water outlet: DN 50
- ❖ Blood Outlet: DN 20

Unit Equipment

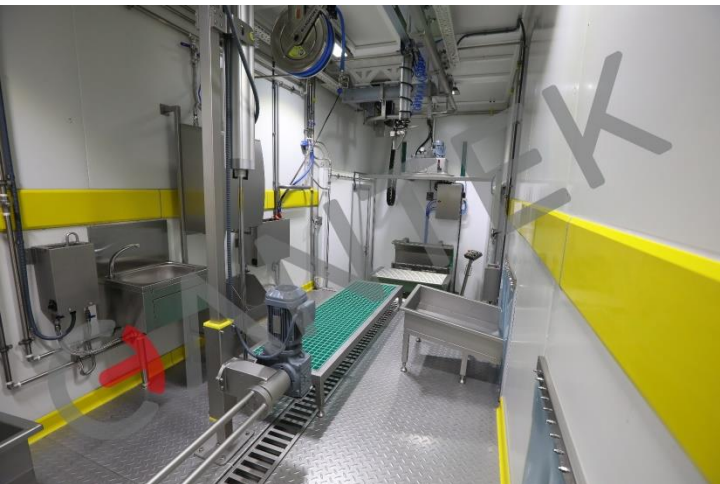
- ❖ Trailer Chassis
 - ❖ Steel Frame Construction
 - ❖ Insulated Panel Covering
 - ❖ Floor Covering and Drainage (SS)
 - ❖ Stunning/Halal slaughter Box (SS)
 - ❖ Bleeding Area & Processing Area rail systems (SS)
 - ❖ Bleeding Hooks (SS)
 - ❖ Processing Hooks (SS)
 - ❖ De-Hiding Machine (SS)
 - ❖ Overhead Carcass Weighting (SS)
 - ❖ Waste Chute (SS)
 - ❖ Washbasin & Knife Sterilizers (SS)
 - ❖ LED Lighting
 - ❖ Generator
 - ❖ Blood Collection Tank (SS)
 - ❖ Waste Water Collection Tank (SS)
 - ❖ Clean Water Storage Tank (SS)
 - ❖ Water Heater
 - ❖ Fully installed piping (SS)
 - ❖ Fully installed electrical cabling
 - ❖ Cleaning System (Combination Unit – Water, Chemicals, Disinfectant)
 - ❖ Hydraulic Control System for Constructions and equipment
 - ❖ Electrical Control Panel with PLC control
- Optional:*
- ❖ *EFA Cutting Tools*

(SS:AISI 304 Stainless Steel)

MOBILE SHEEP&GOAT SLAUGHTER UNIT-ON WHEELS

M-SH-SHEEP-OW100

TYPE: ON WHEELS



MOBILE PIG SLAUGHTER UNIT-ON WHEELS

M-SH-PIG-OW80

TYPE: ON WHEELS



- ❖ A self-contained slaughter unit for pigs with a slaughter capacity at min. 10 head per hour.
- ❖ The unit comprises a towable trailer, so that it just needs to be connected to a truck for transportation.
- ❖ 'Plug-n-play' and ready to use.
- ❖ Mobile solutions eliminate the need for civil or mechanical work as they arrive pre-equipped, minimizing construction and setup time = self-sufficiency by an integrated technical equipment room.
- ❖ Suitable for daily use at any location, i.e. the backyard of a farm.
- ❖ Ensuring food safety and preventing contamination in a secure setting by adhering to specific hygiene regulations.

MOBILE PIG SLAUGHTER UNIT-ON WHEELS

M-SH-PIG-OW80

TYPE: ON WHEELS

Technical Data

- ❖ Dimensions: W:2550, L:13600, H:3800 mm
- ❖ Generator: 88kVA (70.4 kW)
- ❖ Electricity: 380/400 V, 50 Hz
- ❖ Clean Water Inlet: DN 20
- ❖ Waste Water outlet: DN 50
- ❖ Blood Outlet: DN 20

Unit Equipment

- ❖ Trailer Chassis
 - ❖ Steel Frame Construction
 - ❖ Insulated Panel Covering
 - ❖ Floor Covering and Drainage (SS)
 - ❖ Stunning Box (SS)
 - ❖ Bleeding Area & Processing Area rail systems (SS)
 - ❖ Bleeding Hooks (SS)
 - ❖ Processing Hooks (SS)
 - ❖ Scalding Dehairing Machine (SS)
 - ❖ Overhead Carcass Weighting (SS)
 - ❖ Waste Chute (SS)
 - ❖ Washbasin & Knife Sterilizers (SS)
 - ❖ LED Lighting
 - ❖ Generator
 - ❖ Blood Collection Tank (SS)
 - ❖ Waste Water Collection Tank (SS)
 - ❖ Clean Water Storage Tank (SS)
 - ❖ Water Heater
 - ❖ Fully installed piping (SS)
 - ❖ Fully installed electrical cabling
 - ❖ Cleaning System (Combination Unit – Water, Chemicals, Disinfectant)
 - ❖ Hydraulic Control System for Constructions and equipment
 - ❖ Electrical Control Panel with PLC control
- Optional:*
- ❖ *EFA Cutting Tools Optional*

(SS:AISI 304 Stainless Steel)

MOBILE PIG SLAUGHTER UNIT-ON WHEELS

M-SH-PIG-OW80

TYPE:ON WHEELS

Technical Room

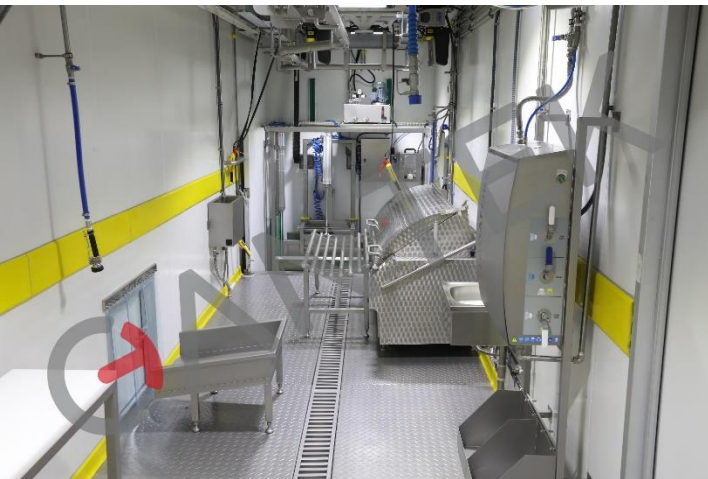
Weighting

Scalding & Dehairing



Evisceration

Stunning & Bleeding



MOBILE POULTRY SLAUGHTER UNIT-ON WHEELS

M-SH-POULTRY-OW800

TYPE: ON WHEELS



- ❖ A self-contained slaughter unit for chicken with a slaughter capacity at min. 100 birds per hour.
- ❖ The unit comprises a towable trailer, so that it just needs to be connected to a truck for transportation.
- ❖ 'Plug-n-play' and ready to use.
- ❖ Mobile solutions eliminate the need for civil or mechanical work as they arrive pre-equipped, minimizing construction and setup time = self-sufficiency by an integrated technical equipment room.
- ❖ Suitable for daily use at any location, i.e. the backyard of a farm.
- ❖ Ensuring food safety and preventing contamination in a secure setting by adhering to specific hygiene regulations.

MOBILE POULTRY SLAUGHTER UNIT-ON WHEELS

M-SH-POULTRY-OW800

TYPE: ON WHEELS

Technical Data

- ❖ Dimensions: W:2550, L:13600, H:3800 mm
- ❖ Generator: 88 kVA (70,4 kW)
- ❖ Electricity: 380/400 V, 50 Hz
- ❖ Clean Water Inlet: DN 20
- ❖ Waste Water outlet: DN 50
- ❖ Blood Outlet: DN 20

Unit Equipment

- ❖ Trailer Chassis
- ❖ Steel Frame Construction
- ❖ Insulated Panel Covering
- ❖ Floor Covering and Drainage (SS)
- ❖ Stunning & slaughter Table Box (SS)
- ❖ Scalding Machine (SS)
- ❖ Plucking Machine (SS)
- ❖ Waste Chute (SS)
- ❖ Washbasin & Knife Sterilizers (SS)
- ❖ Evisceration Rail
- ❖ Evisceration Tables(SS)
- ❖ Pre-cooling Cold room
- ❖ Chicken Carcass Hanged Trolley(SS)
- ❖ LED Lighting
- ❖ Generator
- ❖ Waste Water Collection Tank (SS)
- ❖ Clean Water Storage Tank (SS)
- ❖ Water Heater
- ❖ Fully installed piping (SS)
- ❖ Fully installed electrical cabling
- ❖ Cleaning System (Combination Unit – Water, Chemicals, Disinfectant)
- ❖ Hydraulic Control System for Constructions and equipment
- ❖ Electrical Control Panel with PLC control

Optional:

- ❖ *Cutting Tools Optional*

(SS:AISI 304 Stainless Steel)

MOBILE POULTRY SLAUGHTER UNIT-ON WHEELS

M-SH-POULTRY-OW800

TYPE: ON WHEELS

Stunning & Bleeding

Technical Room

Pre-Cooling Room

Evisceration

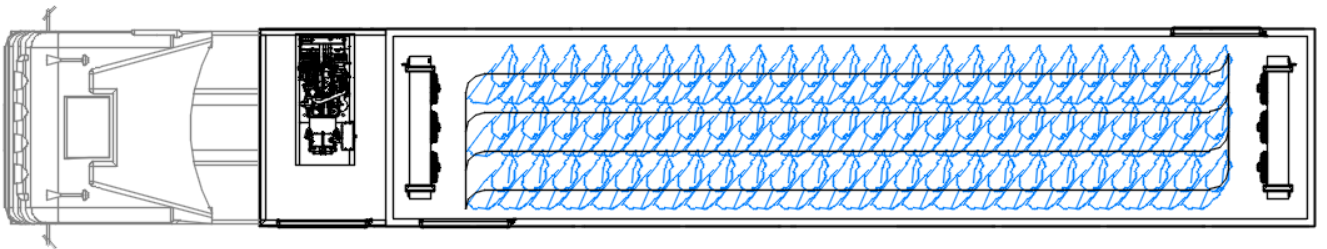
Scalding & Plucking



MOBILE CARCASS COLDROOM UNIT-ON WHEELS

M-CCR-OW4500

TYPE: ON WHEELS



Technical Data

- ❖ Dimensions: W:2550, L:13600, H:3800 mm
- ❖ Generator: 55 kVA / 44 kW
- ❖ Electricity: 380/400 V, 50 Hz
- ❖ Capacity: 60 Cattle Quarter Carcass / 80-90 Sheep Carcass /80-90 Pig Carcass /4500kg
- ❖ Chilling from 36°C to 0-4°C 15-18hours

- ❖ Trailer Chassis
- ❖ Steel Frame Construction
- ❖ Insulated Panel Covering
- ❖ Stainless Steel 304 Floor Covering
- ❖ Stainless Steel overhead rails

MOBILE CATTLE SLAUGHTERING UNIT

M-SH-CATTLE-FX80

TYPE: MODULAR

- ❖ A fully equipped slaughter unit featuring operational power and water connections, designed to fulfil slaughter activities and eliminate any construction-related hassles for the user.
- ❖ Transport Option 1: Transported as one piece on a 3-Axles extensible low-bed trailer on highways.
- ❖ Configured to meet a daily or weekly average slaughter of cattle.
- ❖ A slaughter capacity at min. 12 head per hour.
- ❖ Transport Option 2: Dismantled shipment on 2 containers and installation on-site.



Technical Data

- ❖ Dimensions: W:3200, L:13200, H:5600 mm (H:3200 mm when closed)
- ❖ Installed Power: 40 kW (can varies according to the optional eq.)
- ❖ Electricity Info: 380/400 V, 50 Hz

MOBILE CATTLE SLAUGHTER UNIT

M-SH-CATTLE-FX80

TYPE: MODULAR

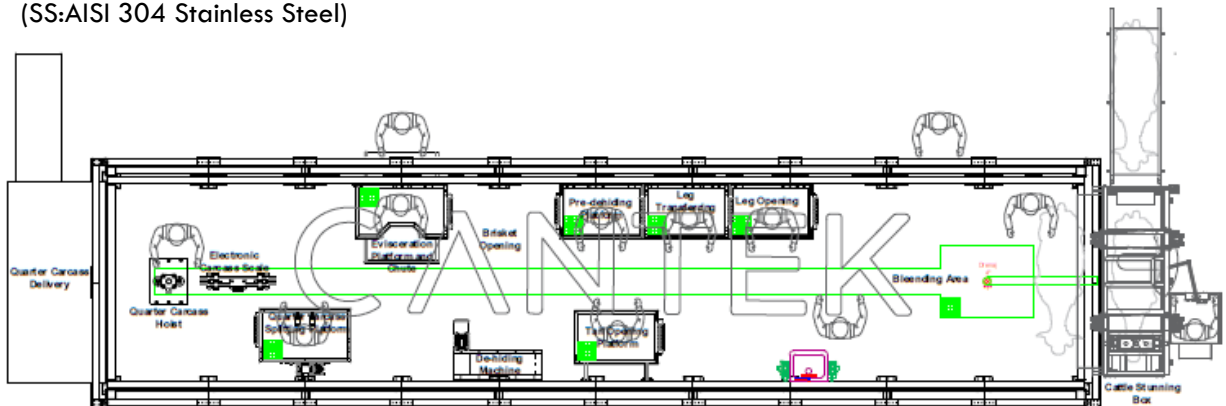
Unit Equipment

- ❖ Double deck slaughter construction
- ❖ Sandwich panel covering
- ❖ Floor covering and stainless-steel drainage
- ❖ Cattle Stunning/ Fixing Box
- ❖ Bleeding area monorail
- ❖ Bleeding crane
- ❖ Monorail bleeding hooks
- ❖ Leg opening platform (SS)
- ❖ Transferring platform (SS)
- ❖ Transferring hoist
- ❖ Processing area stainless steel twin rail
- ❖ Bi-rail processing hooks (SS)
- ❖ Pre-dehiding platform (SS)
- ❖ De-hiding machine
- ❖ Evisceration platform and chute (SS)
- ❖ Pneumatic carcass splitting platform (SS)
- ❖ Electronic carcass scale (SS)
- ❖ Quarter carcass hoist (SS)
- ❖ Washbasin & Knife Sterilizers (SS)
- ❖ Lighting
- ❖ Interior mechanical, electrical and air installations
- ❖ Hose reel for cleaning

Optional:

- ❖ EFA Cutting Tools

(SS:AISI 304 Stainless Steel)



MOBILE CATTLE SLAUGHTERING UNIT

M-SH-CATTLE-FX80

TYPE: MODULAR

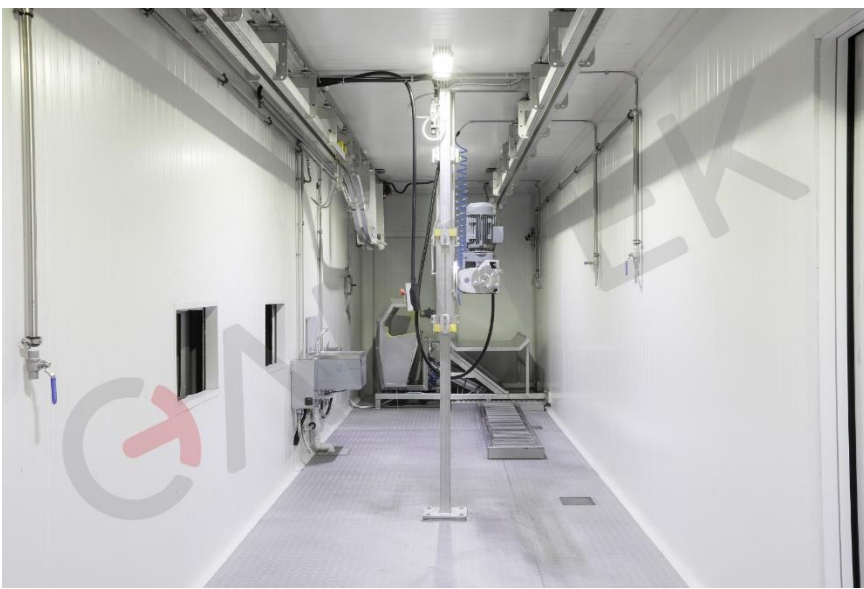


MOBILE SHEEP SLAUGHTER UNIT WITH COLD ROOM

M-SH-SHEEP-T1

TYPE:CONTAINERIZED

- ❖ Appropriate for small to medium-sized agricultural enterprises like farms and breeders aiming to enhance the value of their locally produced goods.
- ❖ A slaughter capacity at min. 10 head per hour.
- ❖ The cooling room accommodates 9 sheep.
- ❖ Containerized solutions are prepared for immediate deployment, reducing installation expenses and saves time.
- ❖ No necessity for construction permits or structural modifications.
- ❖ containerized setup featuring a cooling mechanism within a 40" HC container, readily operational



Technical Data

- ❖ Dimensions: W:2440, L:12190, H:2900 mm
- ❖ Installed Power: 15kW (can varies according to the optional eq.)
- ❖ Electricity Info: 380 / 400 V, 50 Hz

MOBILE SHEEP SLAUGHTER UNIT WITH COLD ROOM

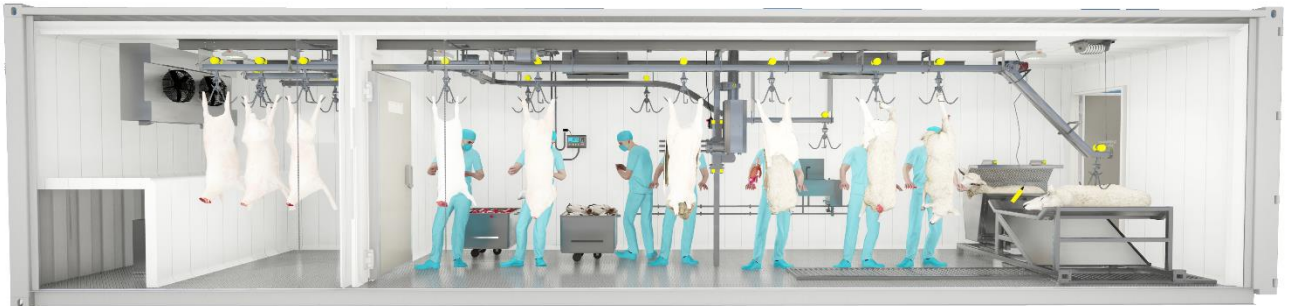
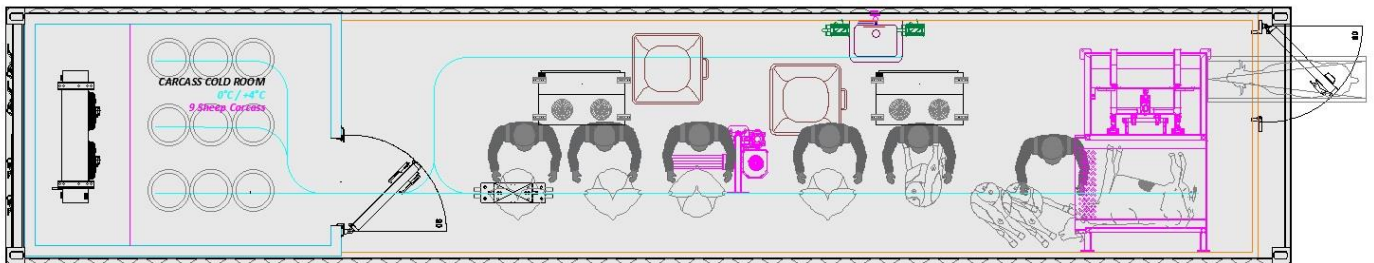
M-SH-SHEEP-T1

TYPE: CONTAINERIZED

Unit Equipment

- ❖ 40" HC Container
 - ❖ Rotating Box & Dehider Machine
 - ❖ Slaughter area sandwich panel covering
 - ❖ Bi-rails (SS)
 - ❖ SS tread plate floor covering
 - ❖ Sheep processing hooks (SS)
 - ❖ Electronic carcass scale (SS)
 - ❖ Washbasin and knife sterilizers (SS)
 - ❖ Working table with pan (SS)
 - ❖ Tripe chute (SS)
 - ❖ Cold room sandwich panel covering
 - ❖ Cold room floor panel covering with plywood
 - ❖ Cooling unit
 - ❖ Hinged cold room door
 - ❖ Carcass exit door
 - ❖ Lighting
 - ❖ Interior mechanical, electrical installations
- (SS: AISI 304 Stainless Steel)

SHEEP SLAUGHTERING UNIT - T1
+18°C
8-10 Sheep/hour



Optional Equipment

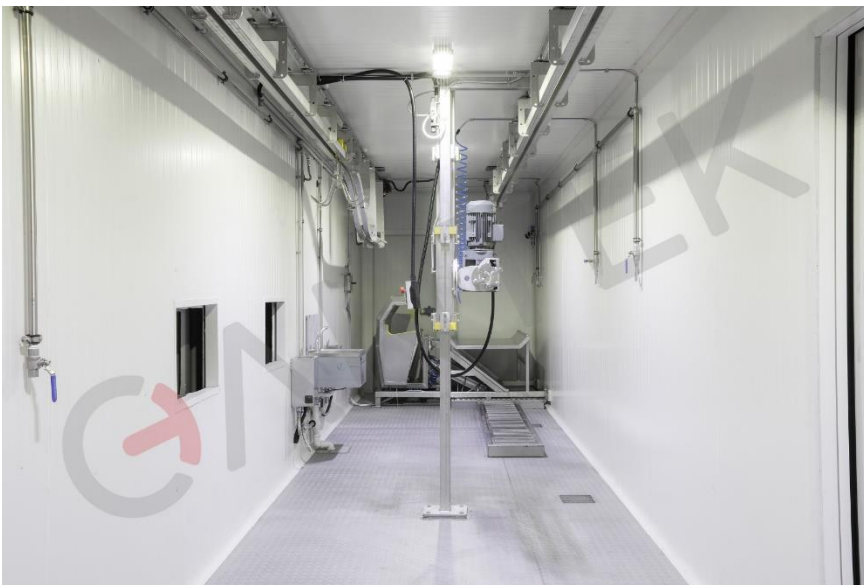
- ❖ Ambiance Cooling; EFA Tools

MOBILE SHEEP SLAUGHTER UNIT

M-SH-SHEEP-T2

TYPE:CONTAINERIZED

- ❖ Appropriate for small to medium-sized agricultural enterprises like farms and breeders aiming to enhance the value of their locally produced goods.
- ❖ A slaughter capacity at min. 15 head per hour.
- ❖ Containerized solutions are prepared for immediate deployment, reducing installation expenses and saves time.
- ❖ No necessity for construction permits or structural modifications.
- ❖ Management is easier because of the compact design of the system.
- ❖ containerized setup within a 40" HC container, readily operational



Technical Data

- ❖ Dimensions: W:2440, L:1 2190, H:2900 mm
- ❖ Installed Power: 8kW (can varies according to the optional eq.)
- ❖ Electricity Info: 380 / 400 V, 50 Hz

MOBILE SHEEP SLAUGHTER UNIT

M-SH-SHEEP-T2

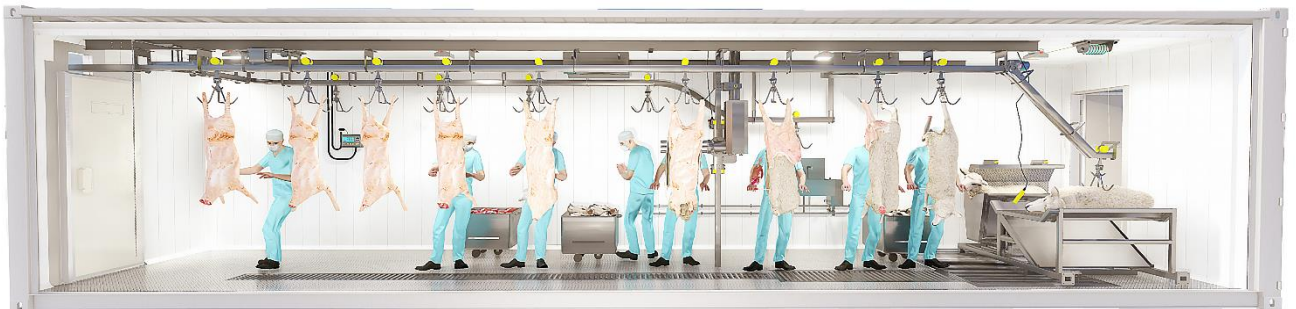
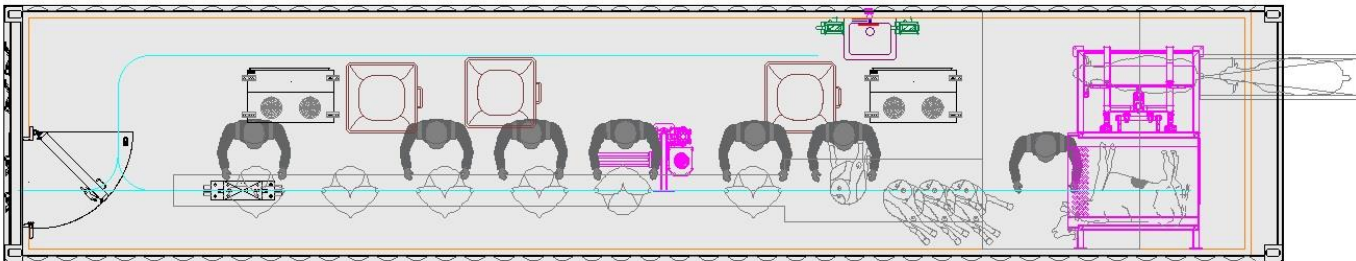
TYPE:CONTAINERIZED

Unit Equipment

- ❖ 40" HC Container
- ❖ Rotating Box & Dehider Machine
- ❖ Sandwich panel covering
- ❖ Bi-rails (SS)
- ❖ Aluminium tread plate floor covering
- ❖ Sheep processing hooks (SS)
- ❖ Electronic carcass scale (SS)
- ❖ Washbasin and knife sterilizers (SS)
- ❖ Working table with pan (SS)
- ❖ Tripe chute (SS)
- ❖ Lighting
- ❖ Hose reel for cleaning
- ❖ Interior mechanical, electrical installations

(SS:AISI 304 Stainless Steel)

SHEEP SLAUGHTERING UNIT - T2
+18°C
10-15 Sheep/hour



Optional Equipment

- ❖ Ambience Cooling; EFA Tools

MOBILE POULTRY SLAUGHTER UNIT

M-SH-POULTRY-T1

TYPE: CONTAINERIZED

- ❖ These ready-for-use modular slaughter units can be installed quickly and easily, even in small spaces.
- ❖ The modular slaughter and processing unit are the ideal solution for small to medium-sized agricultural enterprises like farms and breeders aiming to enhance the value of their locally produced goods.
- ❖ No necessity for construction permits or structural modifications.
- ❖ The modular slaughter unit for poultry guarantees maximum efficiency at a comparably low investment cost.



Technical Data

- ❖ Capacity: 80-100 BPH
- ❖ Dimensions: W:2440, L:12190, H:2900 mm
- ❖ Installed Power: 26 kW (can varies according to the optional eq.)
- ❖ Electricity Info: 380 V/400V 50Hz
- ❖ Air Requirement: 6-8 Bar,

MOBILE POULTRY SLAUGHTER UNIT

M-SH-POULTRY-T1

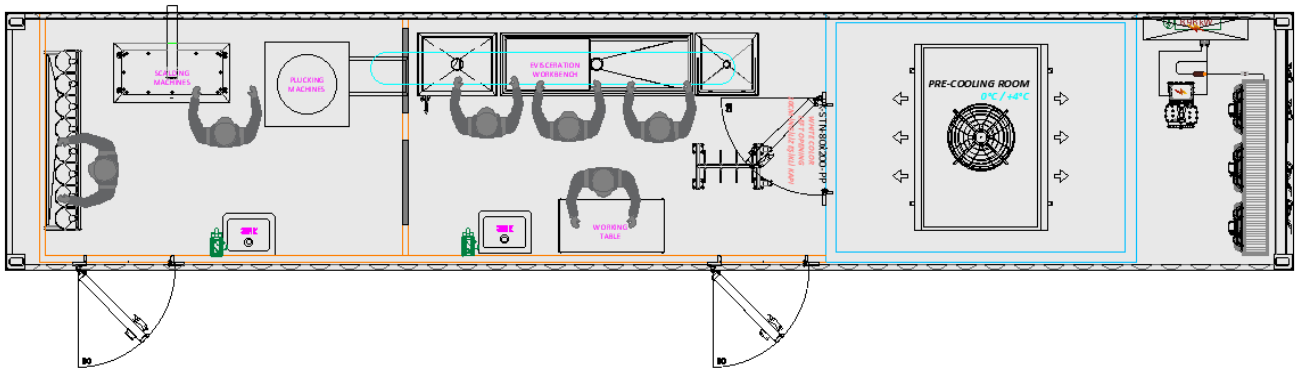
TYPE:CONTAINERIZED

Unit Equipment

- ❖ 40" HC Container
- ❖ Sandwich panel covering
- ❖ SS tread plate floor covering
- ❖ Killing funnel (SS)
- ❖ Scalding
- ❖ Drum Plucker (SS)
- ❖ Evisceration stand (SS)
- ❖ Carcass transport trolley (for air chilling)
- ❖ Chilling system
- ❖ Cold-room door
- ❖ Lighting
- ❖ Electric control panel
- ❖ Washbasin and Knife sterilizers (SS)
- ❖ Interior mechanical, electrical installation
- ❖ Hose reel for cleaning

(SS:AISI 304 Stainless Steel)

POULTRY SLAUGHTERING UNIT
80-100 Chicken/hour



Optional Equipment

- ❖ Ambiance Cooling for process



MOBILE CARCASS COLDROOM UNIT

M-CCR-T1

TYPE: CONTAINERIZED

- ❖ Appropriate for small to medium-sized agricultural enterprises like farms and breeders aiming to enhance the value of their locally produced goods.
- ❖ Cold room capacity is at 2000,00 kgs (~65-75 sheep or ~7-8 cattle)
- ❖ Containerized solutions are prepared for immediate deployment, reducing installation expenses and saves time
- ❖ No necessity for construction permits or structural modifications.
- ❖ The operation is easier because of the compact design of the system.
- ❖ containerized setup featuring a cooling mechanism within a 40" HC container, readily operational



Technical Data

- ❖ Dimensions: W:2440, L:12190, H:2900 mm
- ❖ Electricity Info: 380 / 400 V, 50 Hz
- ❖ Installed Power: 10 kW

MOBILE CARCASS COLDROOM UNIT

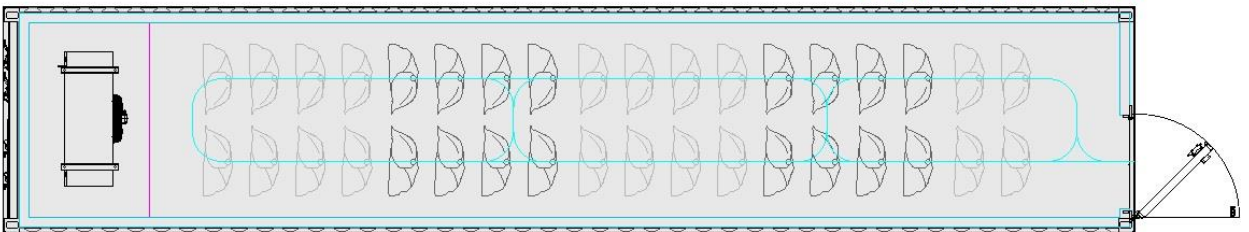
M-CCR-T1

TYPE:CONTAINERIZED

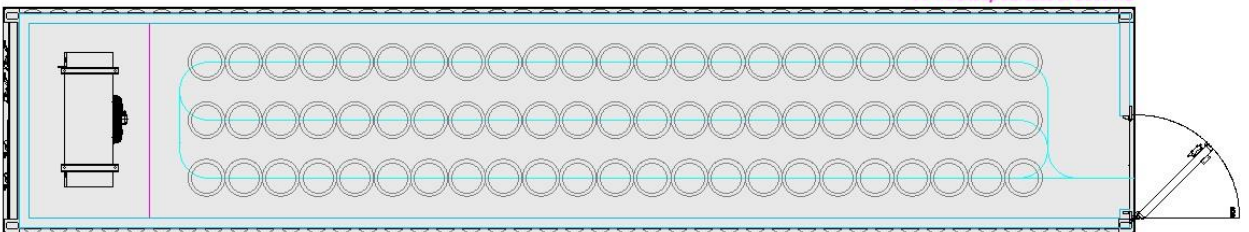
Unit Equipment

- ❖ 40" HC Container
- ❖ Supporting column and beams
- ❖ Sandwich panel covering
- ❖ Floor panel cover with plywood
- ❖ Cooling unit
- ❖ Bi- rails (SS)
- ❖ Sheep or cattle storage hooks (SS)
- ❖ Insulated cold-room door
- ❖ Lighting
- ❖ Interior mechanical, electrical installations

CARCASS COLD ROOM
0°C / +4°C
28-32 Cattle quarter carcass or 2000 KG



CARCASS COLD ROOM
0°C / +4°C
70-75 sheep carcass or 2000 KG

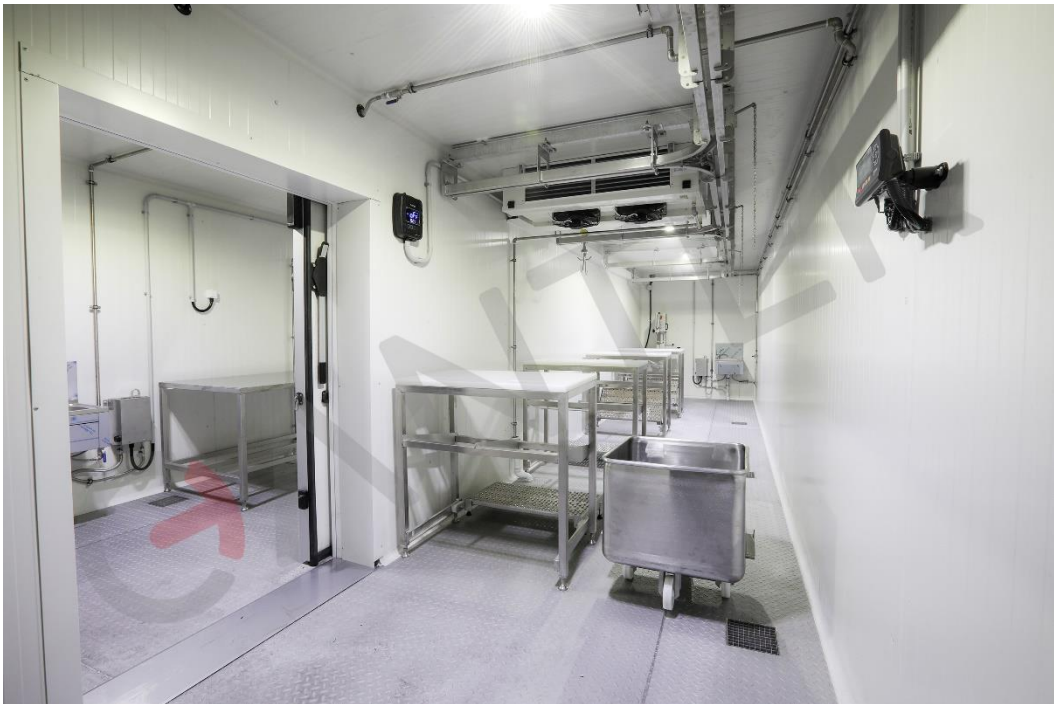


MOBILE CARCASS CUTTING/DEBONING UNIT

M-CUTTING-T1

TYPE:CONTAINERIZED

- ❖ Appropriate for small to medium-sized agricultural enterprises like farms and breeders aiming to enhance the value of their locally produced goods.
- ❖ The capacity is approx. 2 cattle carcass or 10-12 sheep carcass per hour.
- ❖ Containerized solutions are prepared for immediate deployment, reducing installation expenses and saves time.
- ❖ No necessity for construction permits or structural modifications.
- ❖ containerized setup featuring a cooling mechanism within a 40" HC container, readily operational



Technical Data

- ❖ Dimensions: W:2440, L:12190, H:2900 mm
- ❖ Installed Power: 10 kW (can varies according to the optional eq.)
- ❖ Electricity Info: 380 / 400 V, 50 Hz

MOBILE CARCASS CUTTING/DEBONING UNIT

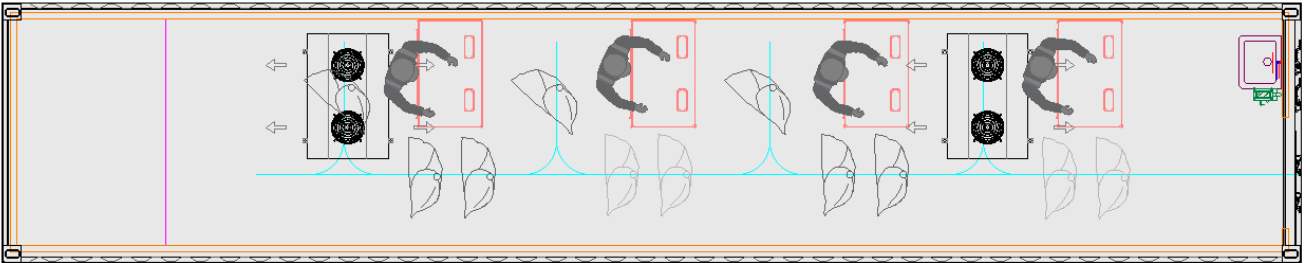
M-CUTTING-T1

TYPE:CONTAINERIZED

Unit Equipment

- ❖ 40" HC Container
- ❖ Supporting column and beams
- ❖ Sandwich panel covering
- ❖ Bi- rails (SS)
- ❖ Tread plate floor covering(SS)
- ❖ Cutting Tables (SS)
- ❖ Electronic carcass scale (SS)
- ❖ Washbasin and knife sterilizers (SS)
- ❖ Lighting
- ❖ Interior mechanical, electrical installations

CARCASS DEBONING-CUTTING UNIT
+10°C



Optional Equipment

- ❖ Trolley, band saws
- ❖ weighting, vacuum, tray sealer etc.

MOBILE OFFAL PROCESSING UNIT

M-OFFAL-T1 & T2 (T1:CATTLE T2:SHEEP)

TYPE:CONTAINERIZED

- ❖ Appropriate for small to medium-sized agricultural enterprises like farms and breeders aiming to enhance the value of their locally produced goods.
- ❖ The devices are swiftly deployed at a low cost of investment and yield a significant profit margin
- ❖ containerized setup featuring a cooling mechanism within a 40" HC container, readily operational



Technical Data

- ❖ Dimensions: W:2440, L:12190, H:2900 mm
- ❖ Installed Power: 5 kW (can varies according to the optional eq.)
- ❖ Electricity Info: 380 / 400 V, 50 Hz

MOBILE OFFAL CLEANING UNIT

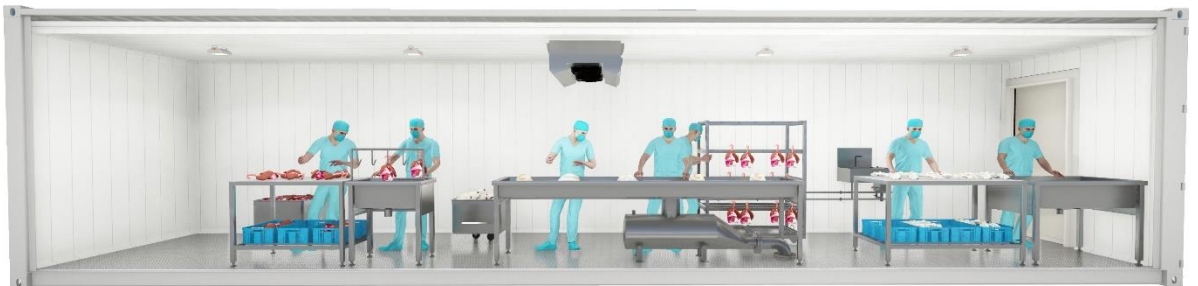
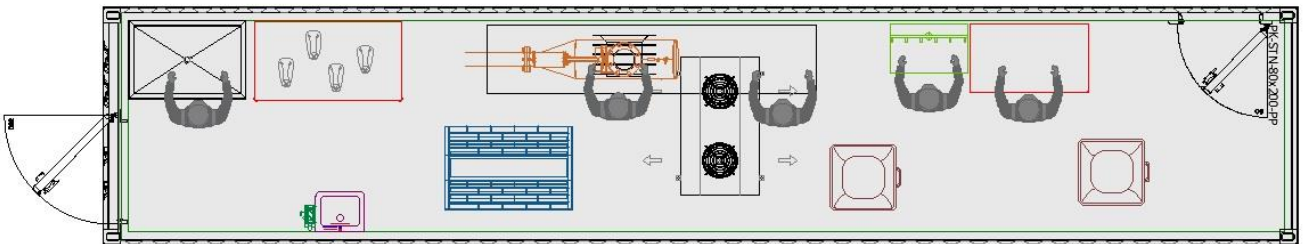
M-OFFAL-T1 & T2 (T1:CATTLE T2:SHEEP)

TYPE:CONTAINERIZED

Unit Equipment

- ❖ 40" HC Container
- ❖ Sandwich panel covering
- ❖ SS tread plate floor covering
- ❖ Tripe Intestine separation and washing table (SS)
- ❖ Hose reel for cleaning
- ❖ Tripe tipper crane
- ❖ Offal hanger (SS)
- ❖ Washbasin and knife sterilizers (SS)
- ❖ Working table (SS)
- ❖ Lighting
- ❖ door
- ❖ Interior mechanical, electrical installations

OFFAL CLEANING UNIT
+18°C



Optional Equipment

- ❖ Tripe cleaning & Refiner, Head & Leg
- ❖ Dehairing, Nail remover etc.

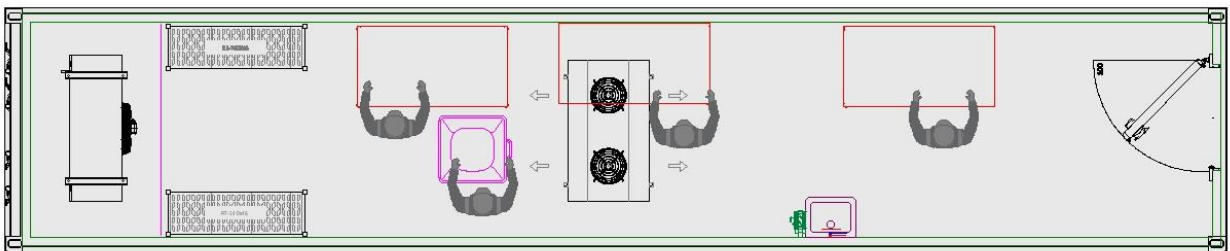
MOBILE PACKAGING UNIT

M-PACKAGING-T1 & P1 (T1:MEAT P1:POULTRY)

TYPE:CONTAINERIZED

- ❖ 40" HC Container
- ❖ Sandwich panel covering
- ❖ SS tread plate floor covering
- ❖ knife sterilizers (SS)
- ❖ Working table (SS)
- ❖ Lighting
- ❖ door
- ❖ Interior mechanical, electrical installations

PACKAGING UNIT
+10°C



Optional Equipment

- ❖ Vacuum machines, tray sealer machines
- ❖ Table product weighting unit etc.



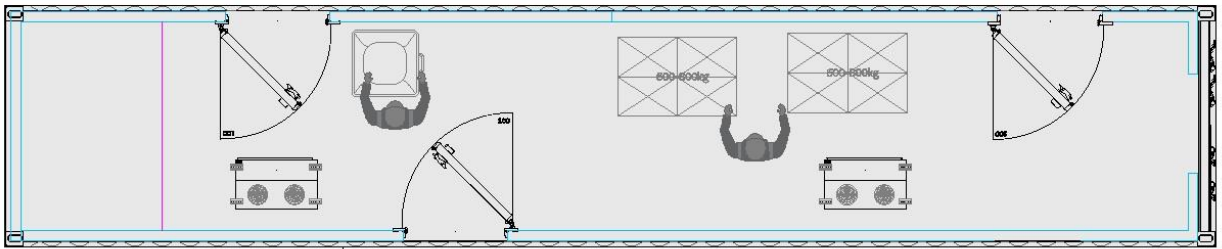
MOBILE CORRIDOR UNIT

M-CORRIDOR-T1 & T2 (T1:WITH RAIL T2:W.OUT RAIL)

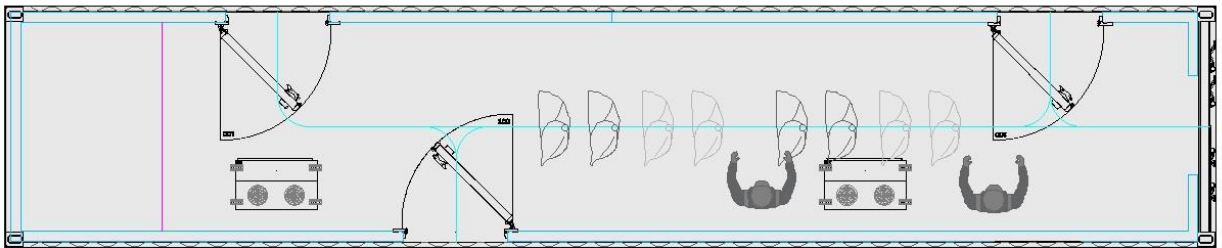
TYPE:CONTAINERIZED

- ❖ 40" HC Container
- ❖ Sandwich panel covering
- ❖ SS tread plate floor covering
- ❖ Lighting
- ❖ Door
- ❖ Interior mechanical, electrical installations

CORRIDOR UNIT-WITHOUT RAIL
+10°C



CORRIDOR UNIT-WITH RAIL
+10°C



MOBILE COLDROOM UNITS

TYPE: CONTAINERIZED

- ❖ Containerized cold storage units by Cantek are portable structures that adhere to global regulations for highway transportation
- ❖ Various types of items requiring refrigeration can be stored on shelves, pallets, or in boxes within a cooled environment.
- ❖ containerized setup featuring a cooling mechanism within a 40" HC container, readily operational
- ❖ The cold room is roomy and simple to maintain in a clean condition.



MOBILE COLDROOM UNIT FRESH STORAGE (0°C+4°C)

M-CR-40FT

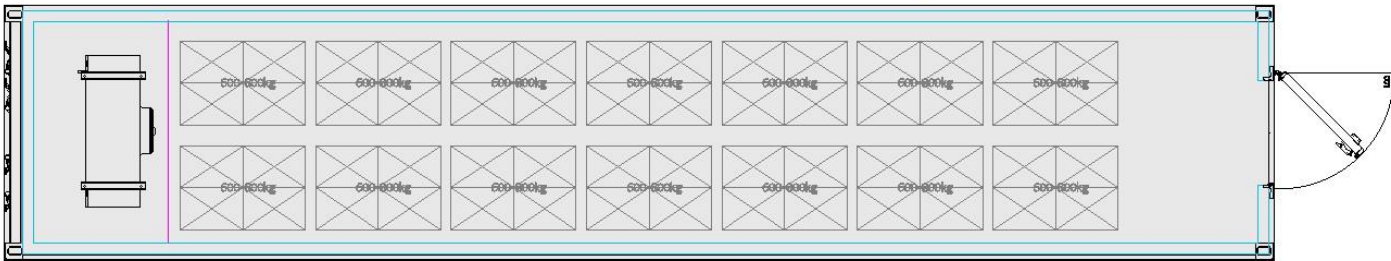
TYPE:CONTAINERIZED

Unit Equipment

- ❖ 40" HC Container
- ❖ Sandwich panel covering
- ❖ Floor panel cover with plywood
- ❖ Cooling unit
- ❖ Insulated cold-room door
- ❖ Electric control panel
- ❖ Lighting
- ❖ Interior mechanical, electrical installations

PRE-COOLING UNIT
0°C / +4°C
2.000kg/day
temp. reducing 36°C to +4°C

FRESH STORAGE UNIT
0°C / +4°C
14 palletes -8.000-9.000kg



MOBILE COLDROOM UNIT FROZEN STORAGE (-18°C)

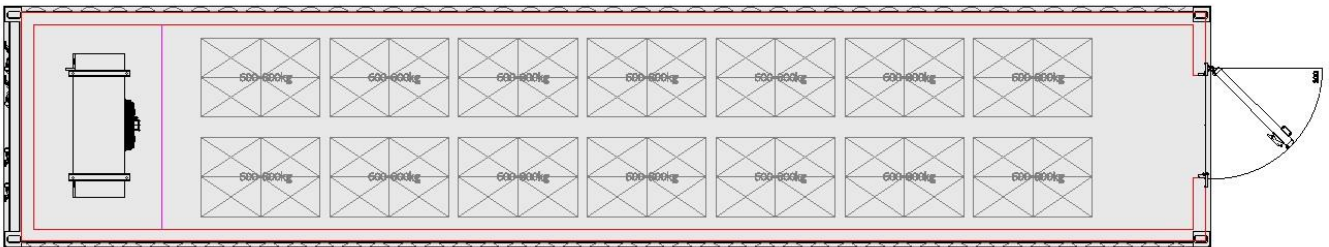
M-DR-40FT

TYPE:CONTAINERIZED

Unit Equipment

- ❖ 40" HC Container
- ❖ Sandwich panel covering
- ❖ Floor panel cover with plywood
- ❖ Cooling unit
- ❖ Insulated cold-room door
- ❖ Electric control panel
- ❖ Lighting
- ❖ Interior mechanical, electrical installations

FROZEN STORAGE UNIT
-18°C
14 palletes -8.000-9.000kg



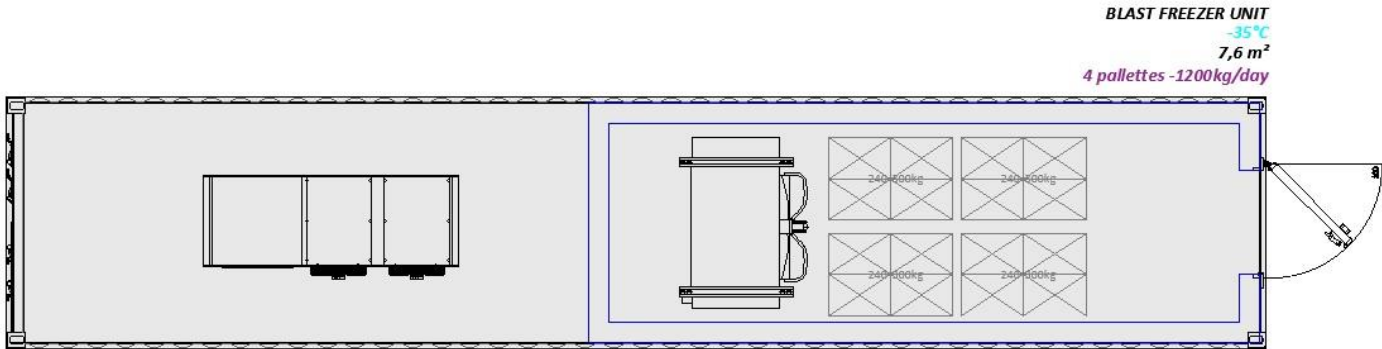
MOBILE COLDROOM UNIT BLAST FREEZER (-35°C)

M-BF-40FT

TYPE: CONTAINERIZED

Unit Equipment

- ❖ 40" HC Container
- ❖ Sandwich panel covering
- ❖ Floor panel cover with plywood
- ❖ Cooling unit
- ❖ Insulated cold-room door
- ❖ Electric control panel
- ❖ Lighting
- ❖ Interior mechanical, electrical installations

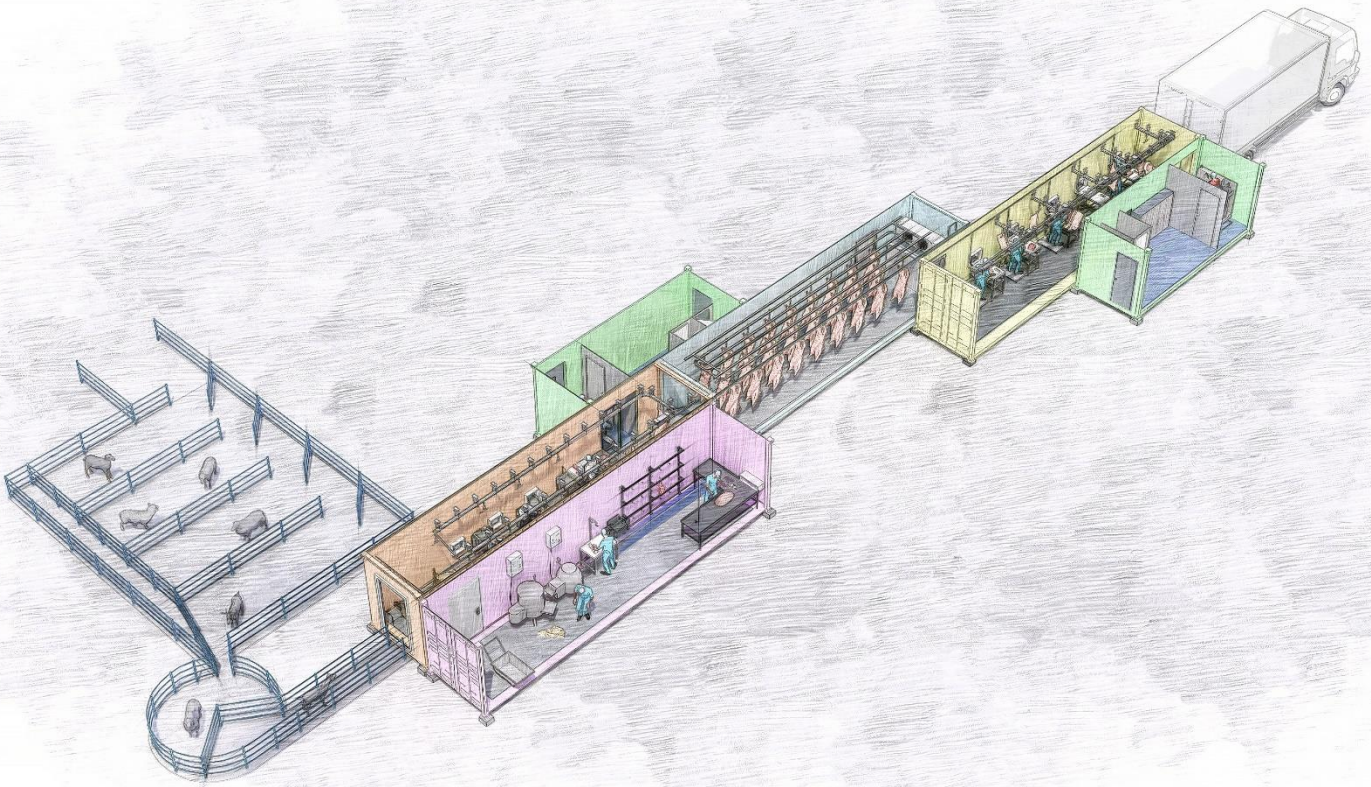


COMBINED MOBILE SOLUTIONS

Create your customized plant –

unique | ultra-efficient | unparalleled

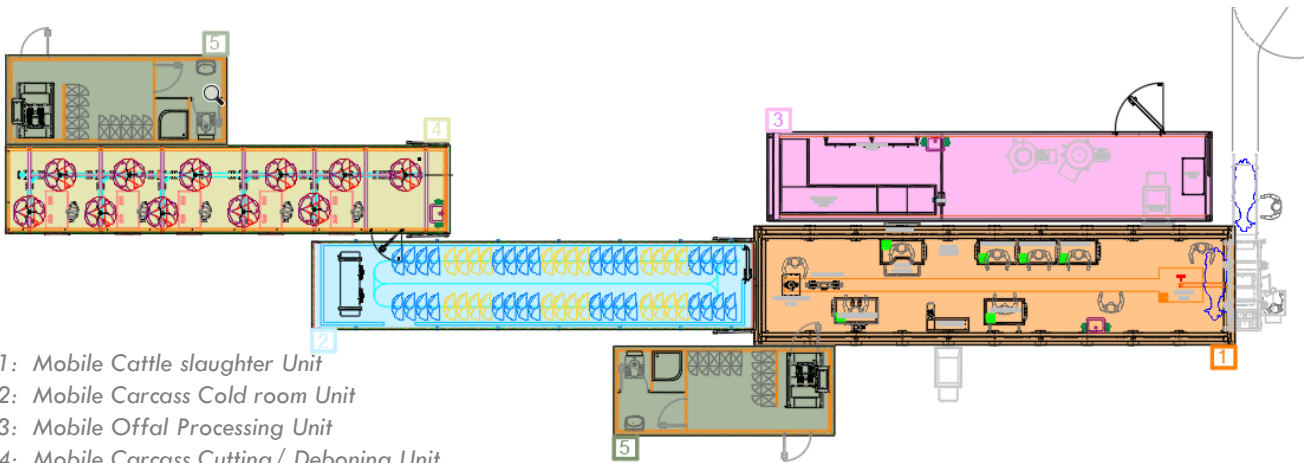
By integrating the modular slaughter units alongside supplementary units designed for various functions like storing carcasses in a cold room, cleaning offal, deboning meat, you can create a combined mobile unit solution that matches the quality of a modern meat processing plant!



- 1: Mobile slaughter Unit
- 2: Mobile Carcass Cold room Unit
- 3: Mobile Offal Processing Unit
- 4: Mobile Carcass Cutting/ Deboning Unit
- 5: Mobile Dressing Unit

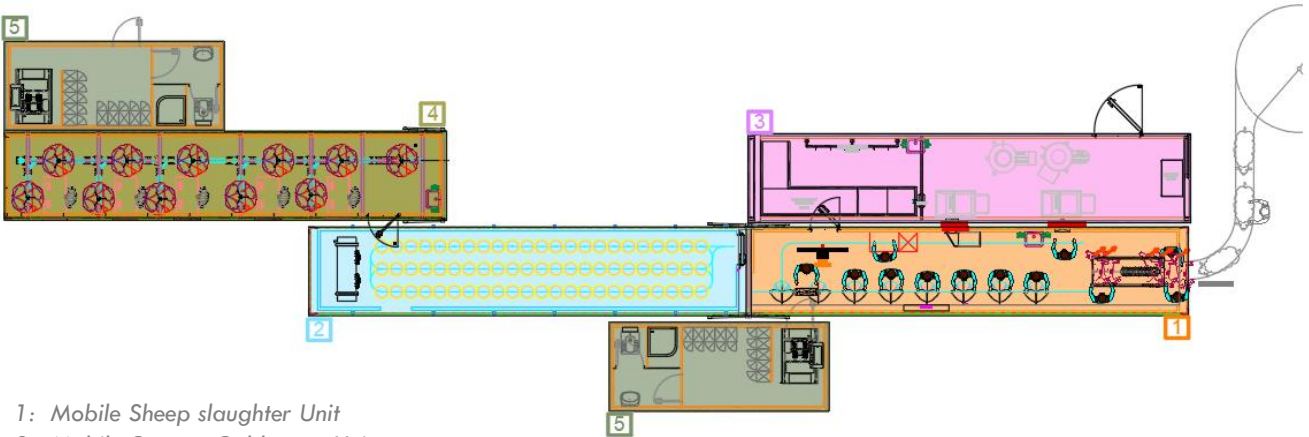
COMBINED MOBILE SOLUTIONS

- ❖ Our mobile systems can be used individually or combined depending on the customer-specific requirements.
- ❖ Additionally, it is possible to link these units with existing buildings, e.g. to expand the plant space + operation areas and/or increase slaughter capacity.
- ❖ The unit quantities depend on the customer requirements.



- 1: Mobile Cattle slaughter Unit
- 2: Mobile Carcass Cold room Unit
- 3: Mobile Offal Processing Unit
- 4: Mobile Carcass Cutting/ Deboning Unit
- 5: Mobile Dressing Unit

EXAMPLE COMBINATION FOR CATTLE



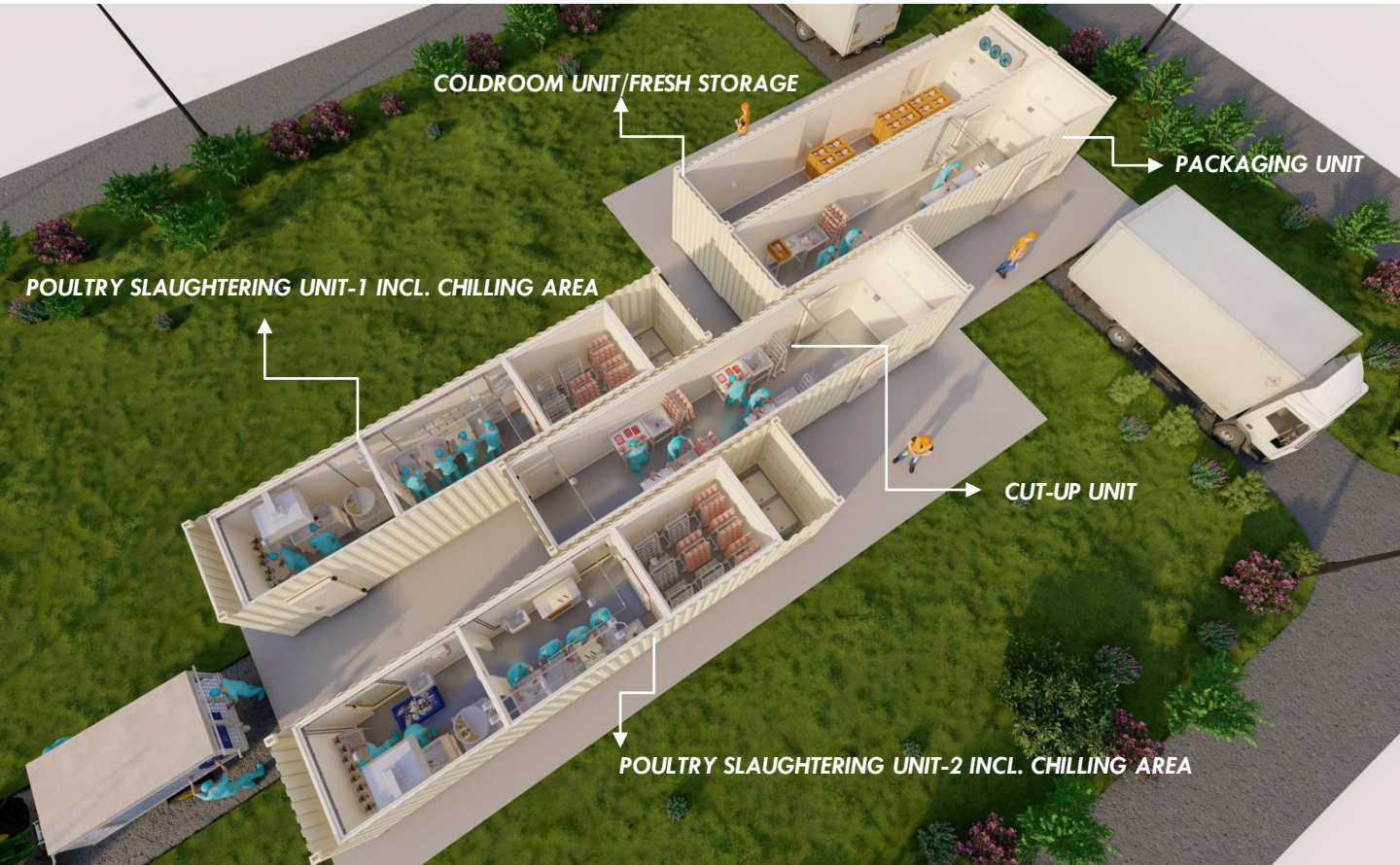
- 1: Mobile Sheep slaughter Unit
- 2: Mobile Carcass Cold room Unit
- 3: Mobile Offal Processing Unit
- 4: Mobile Carcass Cutting/ Deboning Unit
- 5: Mobile Dressing Unit

EXAMPLE COMBINATION FOR SHEEP

COMBINED MOBILE SOLUTIONS

REFERENCE PROJECT

A COMPLETE COMBINED POULTRY MODULAR PROCESSING PLANT PROJECT
1600 BIRDS/DAY | 5 UNITS
LOCATION: AZERBAIJAN



COMBINED MOBILE SOLUTIONS

REFERENCE PROJECT

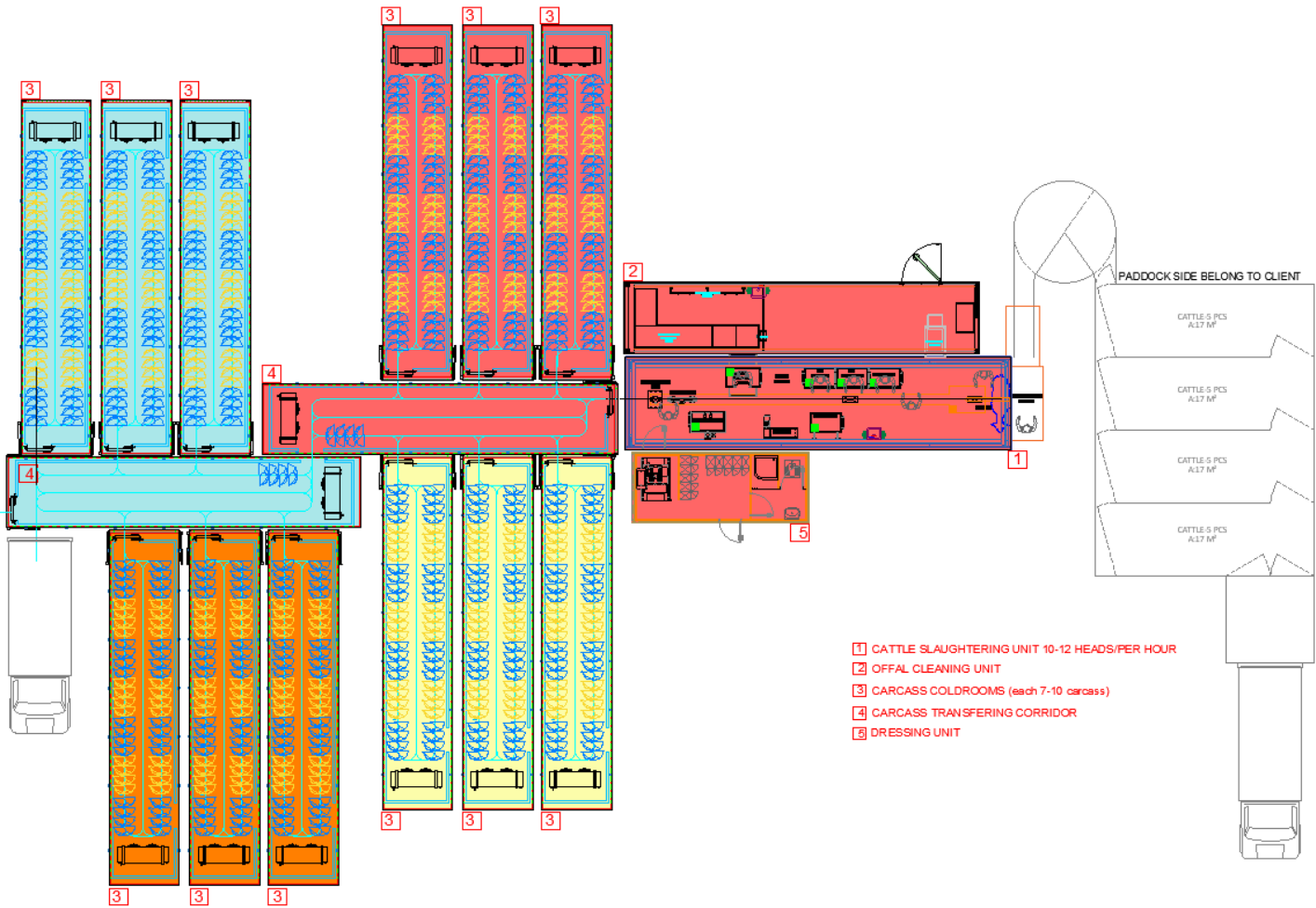
REF: A COMPLETE COMBINED SHEEP & GOAT MODULAR PROCESSING PLANT PROJECT
80 SHEEP HEAD/DAY | 5 UNITS
LOCATION: AZERBAIJAN



COMBINED MOBILE SOLUTIONS

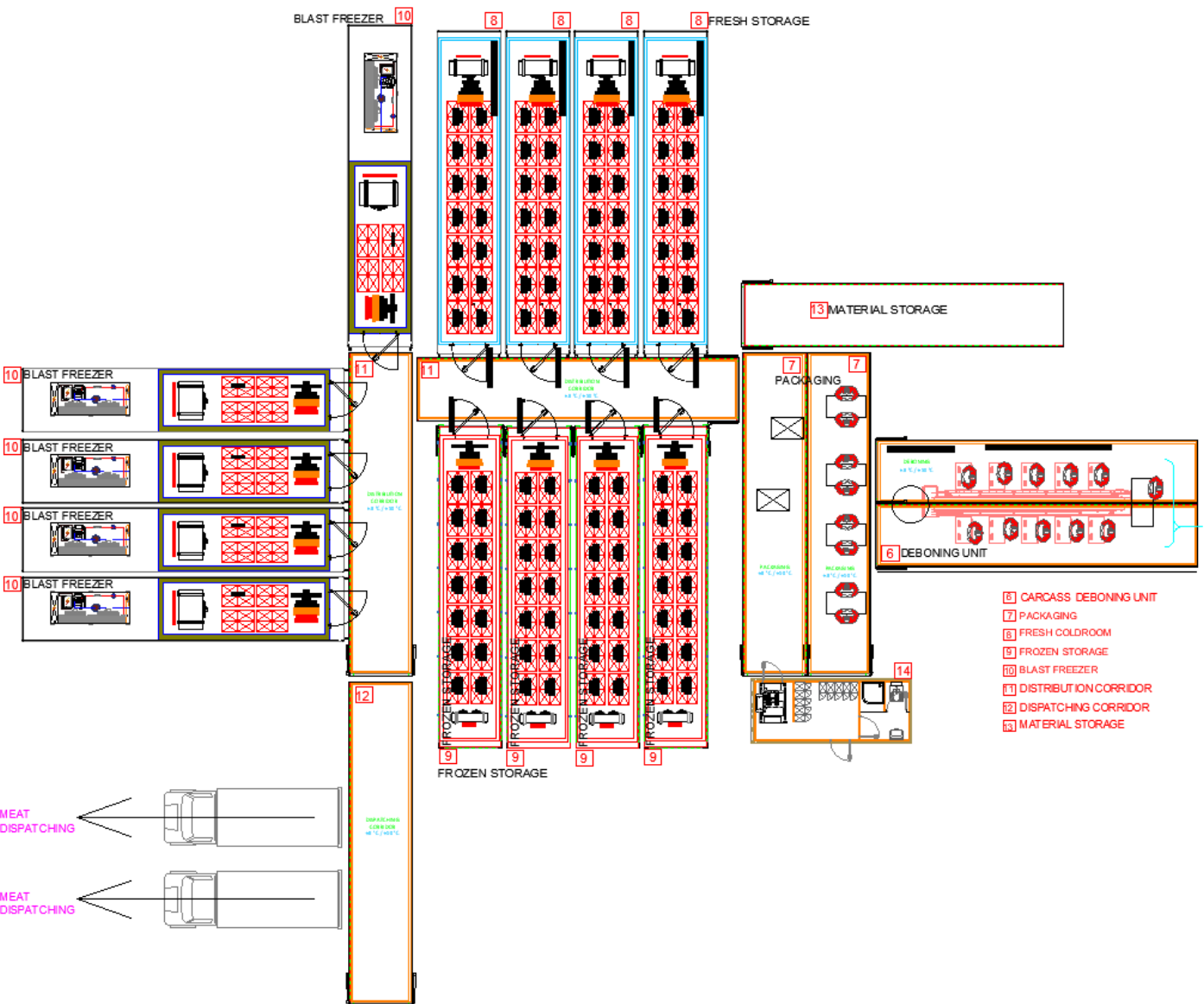
REFERENCE PROJECT

A COMPLETE COMBINED CATTLE MODULAR PROCESSING PLANT – STAGE-1
 SLAUGHTERHOUSE FACILITY 76 CATTLE HEAD/DAY | 23 UNITS
 LOCATION: MONGOLIA



COMBINED MOBILE SOLUTIONS REFERENCE PROJECT

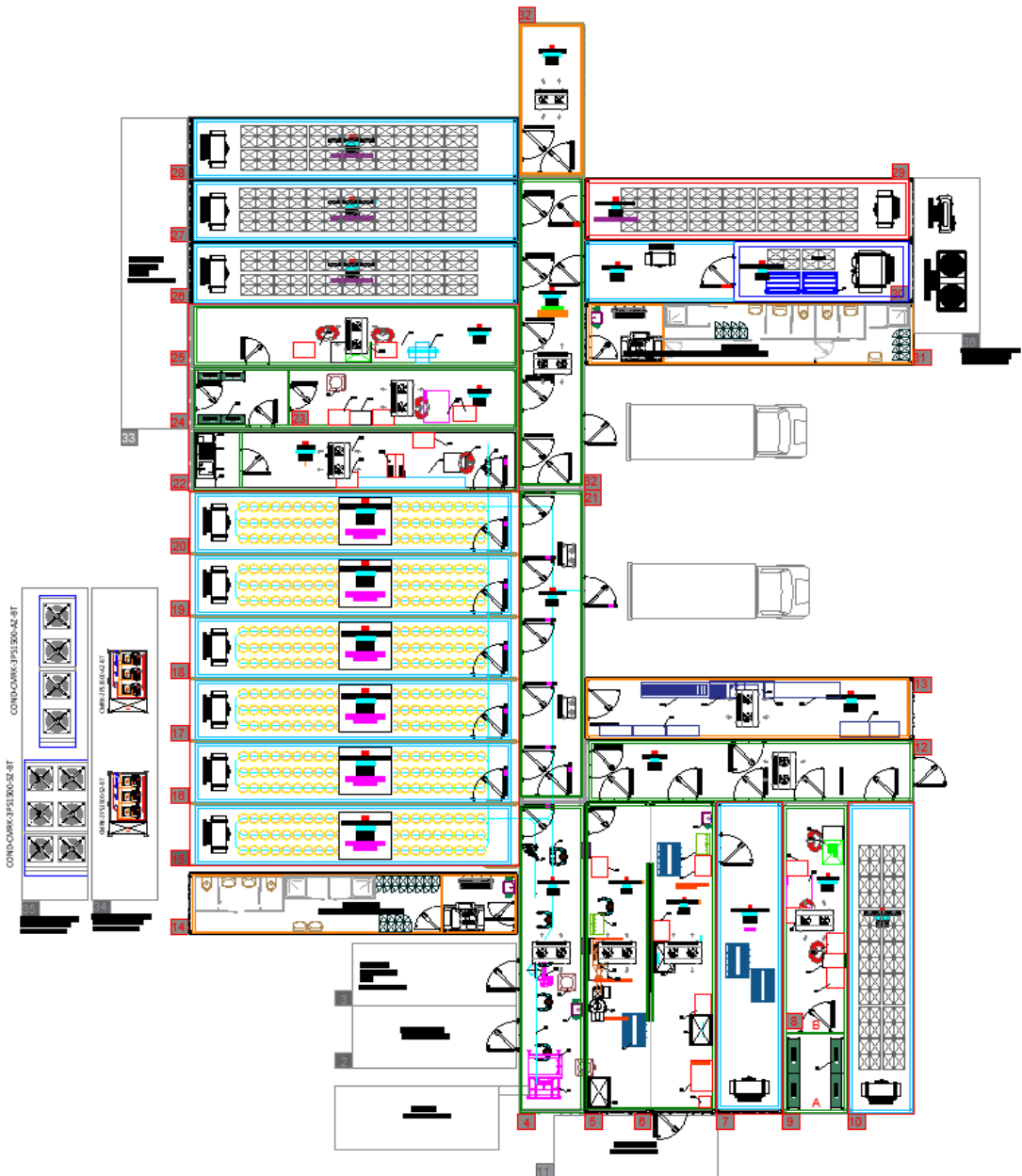
A COMPLETE COMBINED CATTLE MODULAR PROCESSING PLANT— STAGE-2
DEBONING FACILITY 76 CATTLE CARCASS/DAY | 22 UNITS
 LOCATION: MONGOLIA



COMBINED MODULAR SOLUTIONS

REFERENCE PROJECT

A COMPLETE COMBINED SHEEP MODULAR PROCESSING PLANT PROJECT
SLAUGHTERHOUSE FACILITY_150 SHEEP CARCASS/DAY | 26 UNITS
LOCATION: ALGERIA





Organize Sanayi Bölgesi 2. Kısım
21. Cad. No:1 Antalya / TURKEY
T. +90 (242) 258 17 00



www.cantekgroup.com